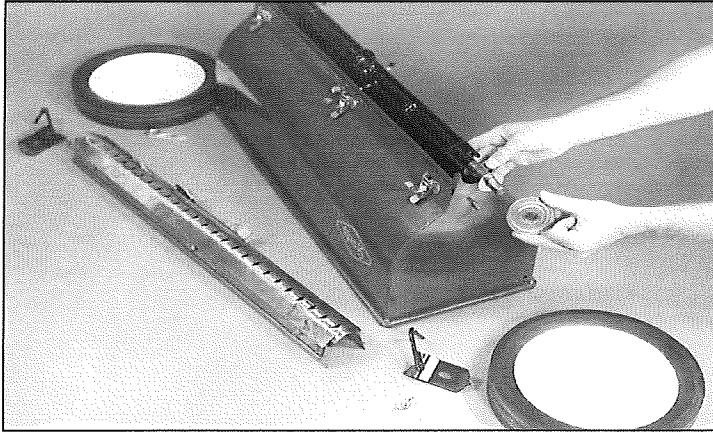




**24 & 36-inch Lawn Spreader  
Operator's Manual**

## Assembly Instructions

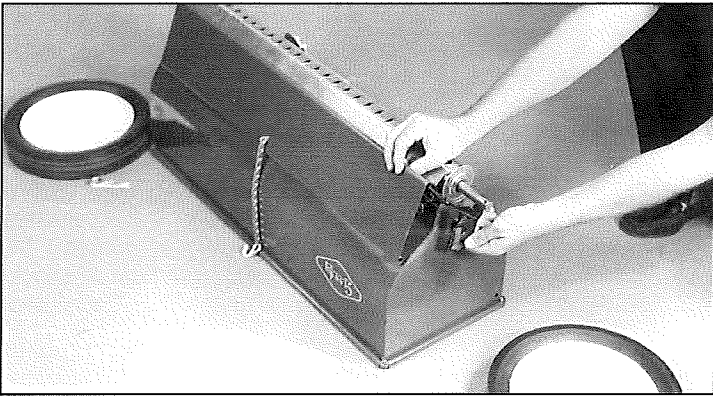


### 1. Assemble Rotors

Place hopper upside down, unsnap and remove bottom. Loosen wing nuts on bearing retainers in place and remove bearings. Slide end washer and bearing onto longer ends of rotor bars and insert rotors into hopper's center bearing.

### 2. Assemble bearing retainers, spread plate

Place bearing retainers over bearings with SAE washer and wing nut. **NOTE:** Retainer rods must project away from handle side.

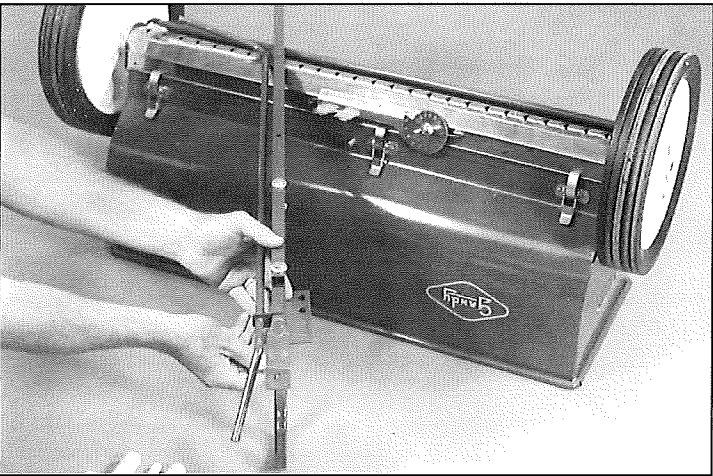


Secure one bearing retainer with spread plate retainer rod in place with SAE washer and wing nut. Slide spread plate assembly onto retainer rod.

Insert rod of other bearing retainer into other end of spread plate and secure retainer in position on bearing with SAE washer and wing nut.

### 3. Attach wheels

Attach wheels on rotor ends with hair pin cotters when using semi-pneumatic tires and with clevis pins when using pneumatic tires.

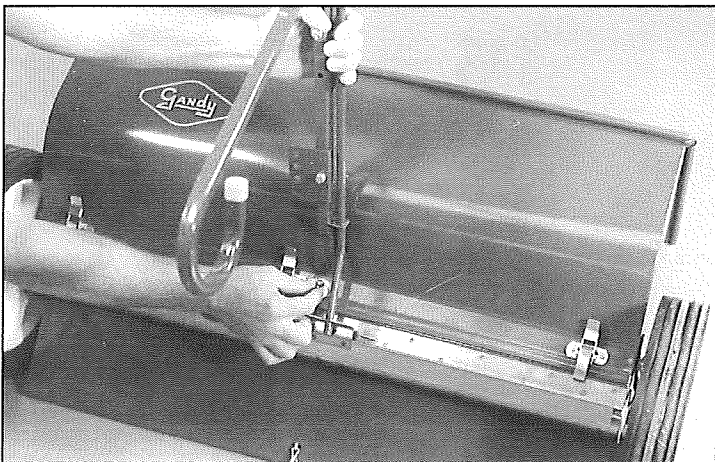


### 4. Assemble Handle

Thread right angle of shutoff lever upwards through lever guide loop on parking stand until loop rests against stop on lever. Slip same right angle of lever upwards through lever guide loop on handle and fasten handle to stand with two 1/4 x 1-3/4" hex bolts, two wrought washers, and lock nuts.

Attach 4-hole hook mounting bracket to underside of parking stand-handle assembly in lowest hole of handle, using 1/4 x 1-3/4 hex bolt, wrought washer and lock nut.

Remove the whiz lock flange nut from stud located on the cam gauge side of the hopper. Attach end of handle-stand assembly to stud with whiz lock flange nut just removed. Be sure shutoff lever is in slot on hopper bottom.



## Assembly Instructions

### 5. Install braces

Turn spreader upright. Attach angle brace to hopper ends using 1/4 x 1/2" hex bolts, securing center of brace to top of handle with 1/4 x 1-1/4" hex bolt, wrought washer and flange nut. NOTE: Brace has center of "U" indentation upwards. Place yellow grips on handle, crank handle and tip of parking stand.

Place hook of spread plate chain in hole of bracket on handle. Adjust to desired level depending on rate of application and product weight to produce "sheet-like" flow. If application without spread plate is desired, swing spread plate to front of hopper and position hook over lip of hopper.

### 6. Install lift handle

Attach handle to front of hopper using 1/4 x 5/8" hex bolts and flange nuts.

## Maintenance

### Empty when finished; remove bottom and rotors

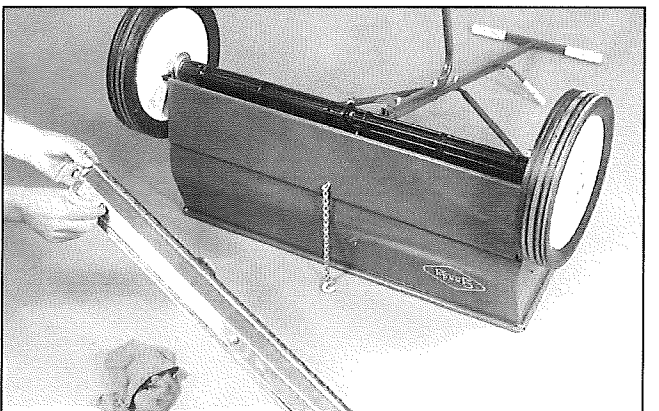
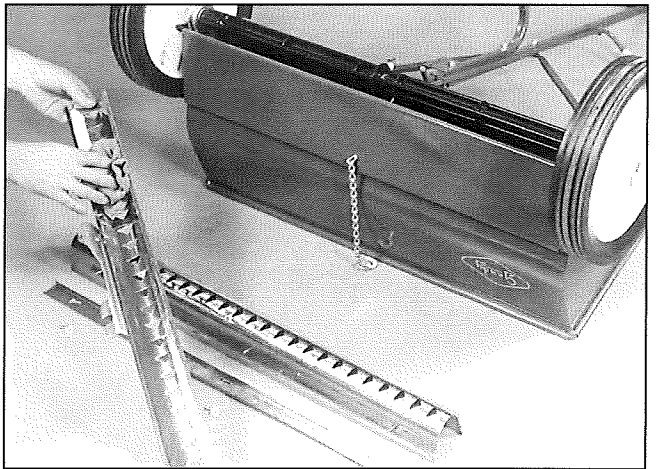
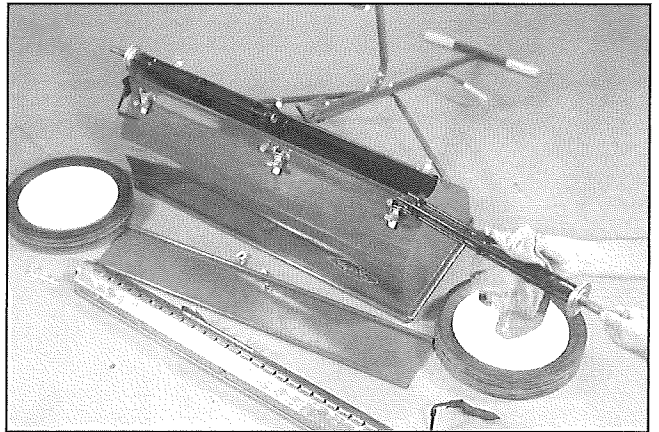
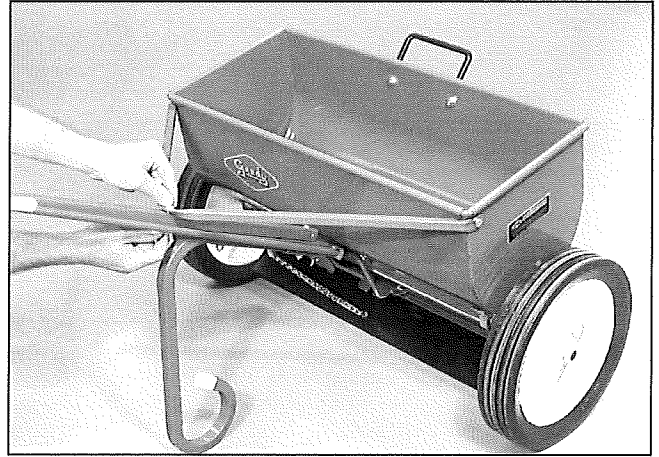
1. After hopper has been emptied, turn hopper over and remove wheels.
2. Loosen wing nuts on bearing retainers.
3. Loosen the latches that secure bottom and slide to hopper. Remove bottom.
4. Remove rotors and end bearings.
5. Wipe all parts clean.
6. Place a few drops of light oil on the end and center bearings after each use. The bearings are oil impregnated and will replenish themselves to their absorption capacity. Some materials have a fine powder in the mixture, so it may be necessary to oil the bearings more often to prevent the powder from working into them.
7. Reassemble.

### If necessary, remove slide from hopper bottom for cleaning.

8. If some materials build up on the hopper bottom, especially when atmospheric humidity is high, disassemble the slide assembly by removing the nuts, nylon washers and slide hanger. Wipe clean.

### Reassemble slide onto hopper bottom

9. For proper slide tension when reassembling slide, gently drive the hanger to the left until the dimple in the slide hanger and bottom match. Secure slide hanger with nylon washers and nuts.



## Calibration/Application

### 1. Determine application speed

Use these distances traveled in one minute:

1 mph 88 ft.	2 mph 176 ft.	3 mph 264 ft.	4 mph 352 ft.	5 mph 440 ft.
1 km/h 16.67 m	2 km/h 33.34 m	3 km/h 50 m	4 km/h 66.68 m	5 km/h 83.35 m

### 2. Set gauge

Refer to the factory-calibrated Gandy rate charts included with your Gandy spreader for a suggested gauge setting. Move gauge away from the stop before attempting adjustment. Turn gauge to desired number, using the top edge of the stop as the setting indicator.

You can 'fine tune' the gauge with extreme precision. The gauge is marked in increments of one. If you adjust one tenth of one gauge stop, from 27.7 to 27.8, for example, the slide will open approximately one thousandth of an inch more. The fine adjustments are possible because the gauge is attached directly to the slide—there is no error through linkage slack.

Remember the settings in the charts are guides for beginning. Check your results as outlined in Step 3 and make adjustments as necessary. **NOTE:** Always move the gauge away from the stop before attempting to set the gauge.

### 3 Check rate

Making a precision application is now simply a matter of filling up the hopper, moving the lever so the gauge is against the stop, walking at your elected speed, and checking your rate.

Most rates are expressed in pounds applied per thousand square feet. Check your rate as follows;

Fill the hopper level full. Treat a known area, such as 1,000 square feet. Weigh enough material to more than fill the hopper level again. Refill the hopper level full and weigh the material left over to see how much was applied in the 1,000 feet. If necessary, adjust gauge up or down and check again.

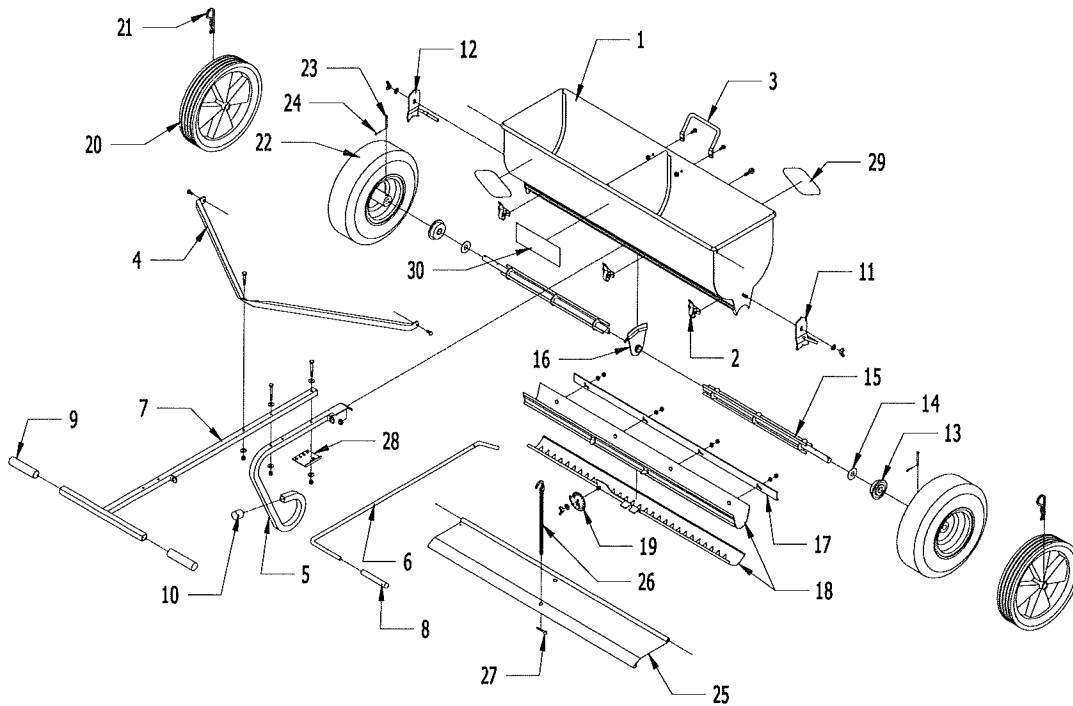
You can make a check on smaller areas, such as 500 square feet or 250 square feet, using 1/2 or 1/4 of the rate per 1,000 feet.

It is important that you check your rate to see that the setting you chose from the chart is giving you the results you want. Atmospheric conditions alone can affect the flow of materials.

**CAUTION:** When applying high potency fertilizers that will burn, be sure to be moving when beginning application.

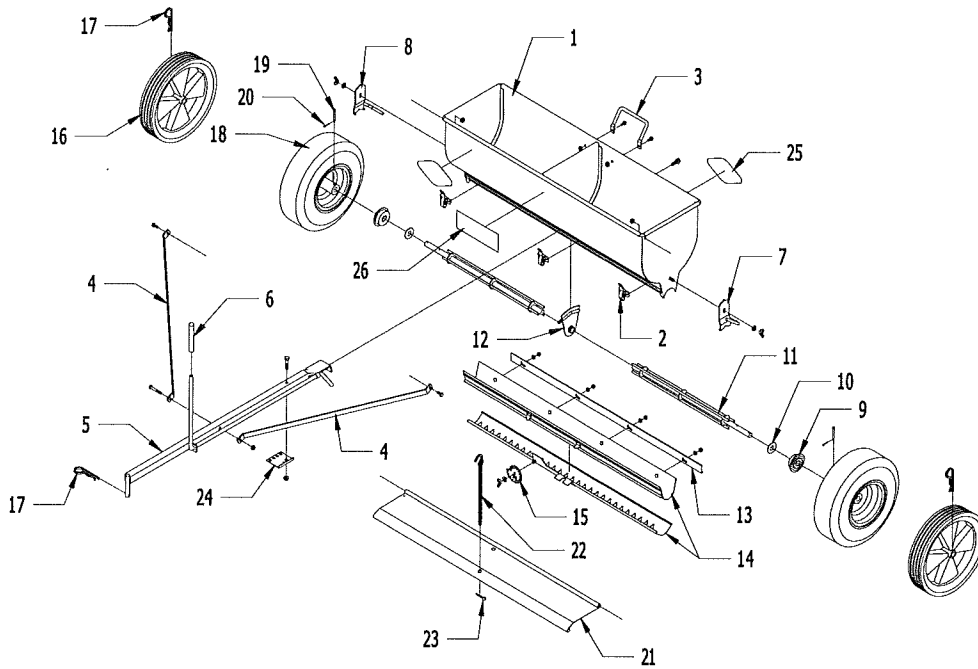


## Schematic/Parts List For 24H12, 24H13, 36H12 & 36H13 Models Only



Ref No.	No. Pcs.	Model 24H Part No.	Model 36H Part No.	Description
1	1	28247951	28368751	Hopper Body
2		280692 (4x)	280692 (6x)	Latch
3	1	2808886-9	2808886-9	Lift Handle
4	1	28247967	28368767	Brace, Handle
5	1	2807971	2807971	Parking Stand
6	1	2808971-2	2807971-2	Shut-Off Lever
7	1	2808971-1	2808971-1	Handle
8	1	J01-4375-000	J01-04375-000	Grip, Shut-Off Lever
9	2	J01-0875-400	J01-0875-400	Grip, Handle
10	1	J02-0687-075	J02-0687-075	Plastic Cap, Parking Stand
11	1	28308654-1	28308654-1	Retainer, End Bearing Left w/Rod
12	1	28308654-2	28308654-2	Retainer, End Bearing Right w/Rod
13	2	090693	090693	Bearing, End
14	2	2807156	2807156	End Washer
15	2	28247155	28368755	Rotor Bar, Tri-Rod
16	1	2807953	2807953	Bearing, Center
17	1	28247212	28368712	Rear Hanger, Slide
18	1	28247968	28368768	Bottom & Slide Variable Rate
19	1	2807175	2807175	Cam Gauge
20	2	28128657	28128657	Wheel, 12-inch (Semi-Pneumatic)
21	2	C21-0177-020	C21-0177-020	Hair Pin Cotter
22	2	R02-0013-000	R02-0013-000	Wheel, 13-Inch (Pneumatic)
23	2	C22-0187-090	C22-0187-090	Clevis Pin (3/16 x 1-3/4)
24	2	C20-0093-020	C20-0093-020	Cotter Pin (3/32 x 3/4)
25	1	2824868	2836878	Spread Plate
26	1	28368785-1	28368785-1	Sash Chain w/S-Hook
27	1	C20-0187-030	C20-0187-030	Cotter Pin (3/16 x 1-1/4)
28	1	2830868-4	2830868-4	Mounting Bracket, S-Hook
29	2	N02-0001-060	N02-0001-060	Gandy Decal
30	1	N02-0028-005	N02-0028-005	Decal, Conversion Chart

### Schematic/Parts List For 24T12, 24T13, 36T12 & 36T13 Models Only



Ref No.	No. Pcs.	Model 24T Part No.	Model 36T Part No.	Description
1	1	28247951	28368751	Hopper Body
2		280692 (4x)	280692 (6x)	Latch
3	1	2808886-9	2808886-9	Lift Handle
4	2	28248713-4	2836713-4	Brace, Hitch
5	1	28308113-3	28308113-3	Hitch Pole
6	1	J01-04375-000	J01-04375-000	Grip, Shut-Off Lever
7	1	28308654-1	28308654-1	Retainer, End Bearing Left w/Rod
8	1	28308654-2	28308654-2	Retainer, End Bearing Right w/Rod
9	2	090693	090693	Bearing, End
10	2	2807156	2807156	End Washer
11	2	28247155	28368755	Rotor Bar, Tri-Rod
12	1	2807953	2807953	Bearing, Center
13	1	28247212	28368712	Rear Hanger, Slide
14	1	28247968	28368768	Bottom & Slide Variable Rate
15	1	2807175	2807175	Cam Gauge
16	2	28128657	28128657	Wheel, 12-inch (Semi-Pneumatic)
17	3	C21-0177-020	C21-0177-020	Hair Pin Cotter
18	2	R02-0013-000	R02-0013-000	Wheel, 13-Inch (Pneumatic)
19	2	C22-0187-090	C22-0187-090	Clevis Pin (3/16 x 1-3/4)
20	2	C20-0093-020	C20-0093-020	Cotter Pin (3/32 x 3/4)
21	1	2824868	2836878	Spread Plate
22	1	28368785-1	28368785-1	Sash Chain w/S-Hook
23	1	C20-0187-030	C20-0187-030	Cotter Pin (3/16 x 1-1/4)
24	1	2830868-4	2830868-4	Mounting Bracket, S-Hook
25	2	N02-0001-060	N02-0001-060	Gandy Decal
26	1	N02-0028-005	N02-0028-005	Decal, Conversion Chart



## Calibration of Gandy Spreaders, 24, 30, 36, and 42-inch models

Model 24, 30, 36, and 42-inch Gandy Spreaders have snap-off stainless steel bottoms. In the charts, the term "gauge settings" refers to the numbers stamped on the gauge of the adjustable, stainless steel bottom which comes as standard equipment. The term "bottom number" refers to the size designation of the various fixed-rate bottoms available for 24, 36, and 42-inch models.

Use this handy conversion chart for setting Gandy spreaders. However, always check your rate of application to be sure your formulation is the same as the one used in calibration. Refer to the calibration procedures on page 3 of this manual. Remember atmospheric conditions alone can affect the flow of materials.

### SCOTT'S GAUGE SETTING NUMBERS

3.5	4.0	4.5	5.0	5.5	6.0	6.5	7.0	7.5	8.0	8.5	9.0	9.5	10.0	11.0	12.0	13.0	14.0	15.0	16.0
-----	-----	-----	-----	-----	-----	-----	-----	-----	-----	-----	-----	-----	------	------	------	------	------	------	------

### GANDY GAUGE SETTING NUMBERS

## Calibration Notes

## Your Owner's Manual

To help you assemble, use and care for your Gandy spreader is the purpose of this manual. Gandy spreaders are rugged, simple machines that make high-precision applications. Proper operation and care as explained inside are important. A parts list is also included so your dealer can order replacements parts.

When in need of replacement parts, always specify the model and serial number stamped on the plate located on the outside end of the applicator hopper. For your reference, write the serial number in the space provided.

Model: \_\_\_\_\_

Serial number: \_\_\_\_\_

### Limited Warranty

The Gandy Company warrants all material and workmanship on equipment delivered to be free of defects for a period of twelve months from date of original purchase. Products used on a commercial, rental or leased basis are warranted for 90 days. Any part or parts thought to be defective within these warranty periods are to be returned through your servicing dealer or distributor to the Gandy Company's plant. Distributor must receive authorization from Gandy Company to return items under warranty. An authorization number will be issued and must be clearly visible on all packages returned to the factory. If found defective by Gandy Company, replacement parts will be forwarded free of charge, prepaid. No service charge or expense on the equipment will be allowed unless such expense has been previously authorized in writing by the Gandy Company. Serial number and model of the unit involved is required by the Gandy Company on all warranty claims. Gandy Company policy is to improve products whenever it is practical to do so. It reserves the right to make changes or add improvements at any time without incurring any obligation to make such changes on products sold previously. This warranty does not apply to products altered by users after the point of manufacture.

This warranty against defects in material and workmanship is in lieu of all other warranties, expressed or implied, and there are no other warranties of any kind whatsoever including, but not limited to, any implied warranty of merchantability or fitness for any particular purpose. In no event shall the company be liable for any incidental or consequential damages whether for breach of warranty, for breach or repudiation of any other term or condition hereof, or for negligence, on the basis of strict liability, or for any other reason.

### SPECIFICATIONS

**Models:** 24H12, 24-inch (61 cm) hopper with handle and 12" x 2-1/4" semi-pneumatic tires; 24H13, 24-inch (61 cm) hopper with handle and 13-inch pneumatic tires; 36H12, 36-inch (92 cm) hopper with handle and 12 x 2-1/4" semi-pneumatic tires; 36H13, 36-inch (92 cm) hopper with handle and 13-inch pneumatic tires; 36T13, 36-inch (92 cm) hipper with tractor hitch and 13-inch pneumatic tires.

**Hopper capacity:** 24-inch models, 1.2 cu. ft. (33 dm<sup>3</sup>), approximately 78 lbs. (35 kg); 36-inch models, 1.8 cu. ft. (50 dm<sup>3</sup>). Approximately 120 lbs. (52 kg). Hopper capacity is based on fertilizer weighing 65 lbs. per cu. ft.

**Tri-bar rotor:** three rods spaced uniformly on axle.

**Rotor bearings:** porous oil-impregnated, sintered bronze alloy, sleeve type.

**Rate Gauge:** precision cam gauge

**Rate chart:** exclusive Gandy rate charts provide suggested settings

**Hopper bottom and rate control slide:** stainless steel bottom and slide micro-precision mated. Openings uniform for all gauge settings. Snaps off for cleaning.

**Shut-off:** crank lever closes slide.

**Wheels:** 12-inch molded plastic with 2-1/4" semi-pneumatic tires; 13-inch pneumatic tire.

**Spread plate:** Standard packages for each model, used to produce sheet-like application of material.

**Fixed-rate packages:** Models with fixed-rate shutoff can be ordered by adding FR to the base model Fixed-rate bottoms are ordered separately.

**Approximate Shipping weight:** Model 24, 45 lbs. (14.5 kg); Model 36, 53 lb. (22 kg)



Gandy Company  
528 Gandrud Road  
Owatonna, MN USA 55060  
Form 2436OM808-IP

507-451-5430

800-443-2476

[www.gandy.net](http://www.gandy.net)

Printed in the U.S.A.