



Illustrated Parts & Packing List

815 Rice Lake Street, Owatonna, MN 55060

For a complete distributor & dealer list go to www.gandy.net

10 Series, 3-Pt. (Cat 2) Hitch Spreader End wheel Drive w/ Hydraulic Shut-Off & Parking Stands For Models 1006T-TR, 1008T-TR, 1010T-TR or 1012T-TR

(User supplies 1/4-inch Hydraulic hoses & 1/4-18 NPT pipe thread fitting.)

(All Hardware in Place Unless Otherwise Specified)

One Hopper Bundle Containing:

6'	8'	10'	12'	
1				016651.....Hopper, 6-Foot w/ Bearings in Place Use: 1 Decal, 10 Series Drop Spreader (N02-0001-077) 1 Decal, Caution (N02-0014-010) 1 Decal, Important (N02-0014-020) 1 Decal, Warning (N02-0057-000) 3010672Bearing, End & Center 3010743Grease Tube Assembly, End & Center Bearing Use: 3 Hex Nut, Fine Thread (3/8-24)(C01-0375-011) 1 Lube Cap, Yellow (J02-0375-000) (in hardware bag) (for center grease tube)
	1			018651.....Hopper, 8-Foot w/ Bearings in Place Use: 1 Decal, 10 Series Drop Spreader (N02-0001-077) 1 Decal, Caution (N02-0014-010) 1 Decal, Important (N02-0014-020) 1 Decal, Warning (N02-0057-000) 3010672Bearing, End & Center 3010743Grease Tube Assembly, End & Center Bearing Use: 3 Hex Nut, Fine Thread (3/8-24)(C01-0375-011) 1 Lube Cap, Yellow (J02-0375-000) (in hardware bag) (for center grease tube)
		1		0110651.....Hopper, 10-Foot w/ Bearing in Place Use: 1 Decal, 10 Series Drop Spreader (N02-0001-077) 1 Decal, Caution (N02-0014-010) 1 Decal, Important (N02-0014-020) 1 Decal, Warning (N02-0057-000) 3010672Bearing, End & Center 3010743Grease Tube Assembly, End & Center Bearing Use: 3 Hex Nut, Fine Thread (3/8-24)(C01-0375-011) 1 Lube Cap, Yellow (J02-0375-000) (in hardware bag) (for center grease tube)
			1	0112651.....Hopper, 12-Foot w/ Bearings in Place Use: 1 Decal, 10 Series Drop Spreader (N02-0001-077) 1 Decal, Caution (N02-0014-010) 1 Decal, Important (N02-0014-020) 1 Decal, Warning (N02-0057-000) 3010672Bearing, End & Center 3010743Grease Tube Assembly, End & Center Bearing Use: 3 Hex Nut, Fine Thread (3/8-24)(C01-0375-011) 1 Lube Cap, Yellow (J02-0375-000) (in hardware bag) (for center grease tube)

6'	8'	10'	12'	
1				0568011&12Bottom & Slide Assembly, 6-Foot Use: 16 Hex Bolt (1/4 x 3/4) (C03-0250-030) 16 Hex Nut (1/4) (C01-0250-010) 2 Rear Hanger 6-Ft (0108016-32) 4 Whiz Flange Nut (3/16) (C01-0187-030) 4 Nylon Grip Washer (1/4) (C02-0250-011) 2 Phillips Head Sheet Metal Screw (#10-16) (C07-0187-040)
	1			0588011&12Bottom & Slide Assembly, 8-Foot Use: 20 Hex Bolt (1/4 x 3/4) (C03-0250-030) 20 Hex Nut (1/4) (C01-0250-010) 4 Rear Hanger (0108016-21) 8 Whiz Flange Nut (3/16) (C01-0187-030) 8 Nylon Grip Washer (1/4) (C02-0250-011) 4 Phillips Head Sheet Metal Screw (#10-16) (C07-0187-040)
		1		05108011&12Bottom & Slide Assembly, 10-Foot Use: 24 Hex Bolt (1/4 x 3/4) (C03-0250-030) 24 Hex Nut (1/4) (C01-0250-010) 4 Rear Hanger 10-FT (0108016-24) 8 Whiz Flange Nut (3/16)(C01-0187-030) 8 Nylon Grip Washer (1/4)(C02-0250-011) 4 Phillips Head Sheet Metal Screw (#10-16)(C07-0187-040)
			1	05128011&12Bottom & Slide Assembly, 12-Foot Use: 28 Hex Bolt (1/4 x 3/4) (C03-0250-030) 28 Hex Nut (1/4) (C01-0250-010) 4 Rear Hanger 6-Ft (0108016-32) 8 Whiz Flange Nut (3/16) (C01-0187-030) 8 Nylon Grip Washer (1/4) (C02-0250-011) 4 Phillips Head Sheet Metal Screw (#10-16) (C07-0187-040)
1	1	1	1	0108075..Cam Gauge Use: 1 Wing Nut, Large (1/2) (C01-0500-021) 2 Shake Proof Lock Washer (1/2) (C02-0500-040)
1	1	1	1	47080100-7Mounting Bracket, Hydraulic Cylinder Use: 2 Hex Bolt (1/4 x 1) (C03-0250-041) 2 Lock Washer (1/4) (C02-0250-010) 2 Hex Nut (1/4) (C01-0250-010)
1				0568098-1Rotor Bar Left, 6-Foot (Black)
1				0568098-2Rotor Bar Right, 6-Foot (Red)
	1			0588098-1Rotor Bar Left, 8-Foot (Black)
	1			0588098-2Rotor Bar Right, 8-Foot (Red)
		1		05108098-1Rotor Bar Left, 10-Foot (Black)
		1		05108098-2Rotor Bar Right, 10-Foot (Red)
			1	05128098-1Rotor Bar Left, 12-Foot (Black)
			1	05128098-2Rotor Bar Right, 12-Foot (Red)
16	22	28	34	0506394-334Powder Angle (3-3/4") Use: Hex Bolt (1/4 x 1)(C03-0250-040) (One Per Powder Angle) SAE Washer (1/4)(C02-0250-020) (One Per Powder Angle)
2	2	2	2	0506394-100Powder Angle (1 Inch) Use: Hex Bolt (1/4 x 1) (C03-0250-040) (One Per Powder Angle) SAE Washer (1/4)(C02-0250-020) (One Per Powder Angle)

6'	8'	10'	12'	
1				0166517-1 Cover, Left, 6-Foot Use: 2 Clevis Pin (1/4 x 2-5/8)(C22-0250-200) (in hardware bag) 2 Cotter Pin (3/32 x 3/4)(C20-0093-020) (in hardware bag)
1				0166517-2 Cover, Right, 6-Foot Use: 2 Clevis Pin (1/4 x 2-5/8)(C22-0250-200) (in hardware bag) 2 Cotter Pin (3/32 x 3/4)(C20-0093-020) (in hardware bag)
	1			0186517-1 Cover, Left, 8-Foot Use: 2 Clevis Pin (1/4 x 2-5/8)(C22-0250-200) (in hardware bag) 2 Cotter Pin (3/32 x 3/4)(C20-0093-020) (in hardware bag)
	1			0186517-2 Cover, Right, 8-Foot Use: 2 Clevis Pin (1/4 x 2-5/8)(C22-0250-200) (in hardware bag) 2 Cotter Pin (3/32 x 3/4)(C20-0093-020) (in hardware bag)
		1		01106517-1 Cover, Left, 10-Foot Use: 2 Clevis Pin (1/4 x 2-5/8)(C22-0250-200) (in hardware bag) 2 Cotter Pin (3/32 x 3/4)(C20-0093-020) (in hardware bag)
		1		01106517-2 Cover, Right, 10-Foot Use: 2 Clevis Pin (1/4 x 2-5/8)(C22-0250-200) (in hardware bag) 2 Cotter Pin (3/32 x 3/4)(C20-0093-020) (in hardware bag)
			1	01126517-1 Cover, Left, 12-Foot Use: 2 Clevis Pin (1/4 x 2-5/8)(C22-0250-200) (in hardware bag) 2 Cotter Pin (3/32 x 3/4)(C20-0093-020) (in hardware bag)
			1	01126517-2 Cover, Right, 12-Foot Use: 2 Clevis Pin (1/4 x 2-5/8)(C22-0250-200) (in hardware bag) Cotter Pin (3/32 x 3/4)(C20-0093-020) (in hardware bag)
4	4	4	4	1406318.. Cover Lock (in hardware bag) Use: 4 Cotter Pin (3/32 x 3/4)(C20-0093-020) (in hardware bag)
1	1	1	1	0106519.. Rain Trough Use: 1 Drive Screw (#12 x 1/2) (C11-0209-010) (in hardware bag)
1				4367921.. Spread Plate, 6-Foot (ONE ONLY) Use: 2 Sash Chain #50 (21-Link) (05108121-1/1) 2 Cotter Pin (3/16 x 3/4) (C20-0187-010)
	1			0588221-1 Spread Plate, Left, 8-Foot Use: 2 Sash Chain #50 (21-Link) (05108121-1/1) 2 Cotter Pin (3/16 x 3/4) (C20-0187-010)
	1			0588221-2 Spread Plate, Right, 8-Foot Use: 2 Sash Chain #50 (21-Link) (05108121-1/1) 2 Cotter Pin (3/16 x 3/4) (C20-0187-010)
		1		05108121-1 Spread Plate, Left, 10-Foot Use: 2 Sash Chain #50 (21-Link) (05108121-1/1) 2 Cotter Pin (3/16 x 3/4) (C20-0187-010)
		1		05108121-2 Spread Plate, Right, 10-Foot Use: 2 Sash Chain #50 (21-Link) (05108121-1/1) 2 Cotter Pin (3/16 x 3/4) (C20-0187-010)
			1	43127921-1 Spread Plate, Left, 12-Foot Use: 2 Sash Chain, #50(21-Link) (05108121-1/1) 2 Cotter Pin (3/16 x 3/4) (C20-0187-010)
			1	43127921-2 Spread Plate, Right, 12-Foot Use: 2 Sash Chain, #50 (21-Link) (05108121-1/1) 2 Cotter Pin (3/16 x 3/4) (C20-0187-010)
2	4	4	4	43127920 Hanger Strap, Spread Plate
2	4	4	4	4307918.. Chain Hook, Spread Plate

6'	8'	10'	12'	
1	1	1	1	3306929-1End Plate Left, Tool Bar Mount Use: 2 Hex Bolt (3/8 x 5 Gr8) (C03-0375-181) 2 Hex Bolt (3/8 x 5-1/2) (C03-0375-191) 4 Lock Washer (3/8) (C02-0375-010) 4 Hex Bolt (3/8) (C01-0375-010)
1	1	1	1	3306929-2End Plate Right, Tool Bar Mount Use: 2 Hex Bolt (3/8 x 5 Gr8) (C03-0375-181) 2 Hex Bolt (3/8 x 5-1/2) (C03-0375-191) 4 Lock Washer (3/8) (C02-0375-010) 4 Hex Bolt (3/8) (C01-0375-010)
1	1	1	1	0106548..Axle, Left
1	1	1	1	0106549..Axle, Right
2	2	2	2	0106360..Wheel Hub Use: 12 Hub Nut (1/2-20) (C01-0500-080) (in Hardware Bag) 12 Hub Stud Bolt (1/2-20 x 1-5/8) (C14-0500-060) 2 Grease Fitting (D01-5300-050)
4	4	4	4	010655-3Collar, Wheel Hub Use: 2 Grease Fitting (D01-5010-050) 4 Hex Nut (3/8) (C01-0375-010) 4 Lock Washer (3/8) (C02-0375-010) 4 Hex Bolt (3/8 x 1-3/4) (C01-0375-071) (Lower Holes, Collar to Axle Plate)
2	2	2	2	3306951..Stub Drive, Complete
2	2	2	2	010656-3Clutch Pin Use: 2 Cotter Pin (1/8 x 3/4) (C20-0125-020)
2	2	2	2	010656-4Lever, Clutch Pin Use: 2 Clutch Washer (33/64 I.D.) (C02-0515-070) 2 Washer (1/2) (C02-0500-021) 2 Cotter Pin (1/8 x 1) (C20-0125-030) 2 Spring, Clutch (E01-0666-4)
1	1	1	1	3307021.....Bracket Right Angle Slotted Use: 1 Hex Bolt (5/8 x 2) (C03-0625-081) 1 Wrought Washer (5/8) (C02-0625-030) 1 Lock Washer (5/8) (C02-0625-010) 1 Hex Nut (5/8) (C01-0625-010)
2	2	2	2	09068349.....Clamp Cap (tool bar to 3307021 bracket) Use: 1 Hex Bolt (5/8 x 6-1/2) (C03-0625-211) 1 Hex Bolt (5/8 x 7 Gr8) (C03-0625-222) 2 Lock Washer (5/8) (C02-0625-010) 2 Wrought Washer (5/8) (C02-0625-030) 2 Hex Nut (5/8) (C01-0625-010)
4	4	4	4	3306930.....Parking Stand Use: 4 Clevis Pin (3/8 x 4) (C22-0375-240) 4 Hair Pin Cotter (1/8 x 2-9/16) (C21-0125-030)
2	2	2	2	3206920.....Clamp Cap (For Tool Bar) Use: 4 Hex Bolt (5/8 x 8-1/2) (C03-0625-251) 4 Wrought Washer (5/8) (C02-0625-030) 4 Lock Washer (5/8) (C02-0625-010) 4 Hex Nut (5/8) (C01-0625-010)
1	1	1	1	3267586-76Tool Bar (76-inch Long for 6-Ft Hopper) 3287586-100Tool Bar (100-inch Long for 8-Ft Hopper) 32107586-124Tool Bar (124-inch Long for 10-ft Hopper) 32127586-148Tool Bar (148-inch Long for 12-Ft Hopper)
2	2	2	2	R01-0015-020Disk Wheels (Rims)

1..... 3209742.....Hydraulic Cylinder (Shipped Assembled in Place)

- 1..... 3207042-7.....Clevis Rod End
 - Use: 1 Clevis Pin (1/2 x 1-1/4) (C22-0500-020)
 - 1 Cotter Pin (5/32 x 1) (C20-0156-020)
- 1..... 3209742-13.....Cylinder
 - Use: 1 Clevis Pin (1/2 x 1-1/4) (C22-05000-020)
 - 1 Cotter Pin (5/32 x 1) (C20-0156-020)
- 1..... 3207642-4.....Piston & Rod
 - Use: 1 Jam Nut (7/16-14) (C01-0437-060)
- 1..... D08-0500-015C/R Seal, 4912 (.500 Shaft)
- 1..... K03-0500-000O-Ring (1/2 x 11/16 x 3/32)
- 1..... K03-0750-000O-Ring (3/4 x 1 x 1/8)
- 1..... K03-0875-000O-Ring (7/8 x 1-1/16 x 3/32)
- 1..... K05-0250-000Hydraulic Needle Valve (1/4)
- 2..... K05-0750-000Spiral RG M528782-15
- 1..... K11-0250-025Nipple (1/4 x 1-3/8)
- 2..... J03-0250-000.....1/4 Pipe Plug

1..... 33A6980.....3-PT Hitch Bundle (Shipped Unassembled From Hopper)

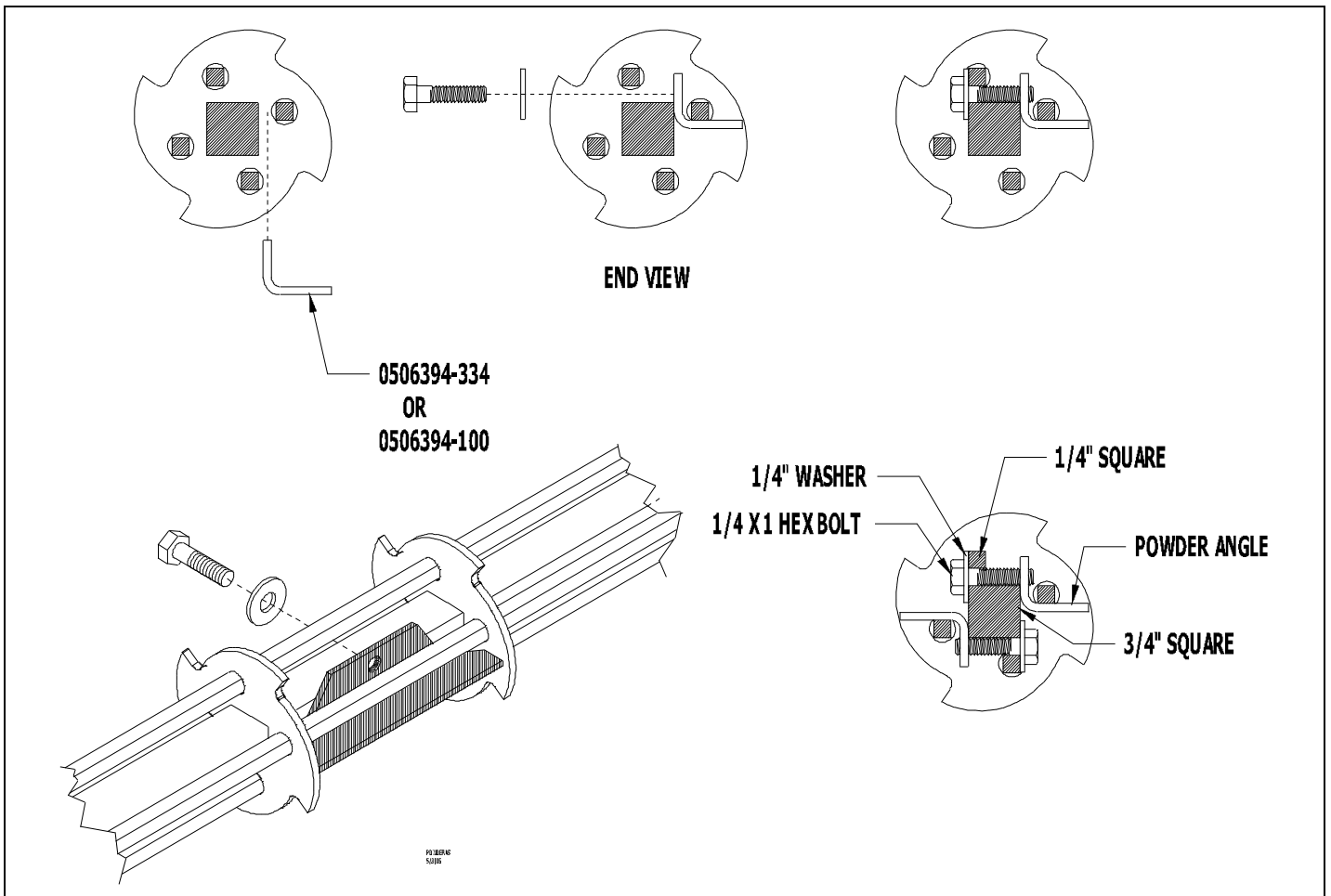
- 1..... 3306980.....3-PT Hitch
 - Use: 1 Hex Bolt (5/8 x 1-3/4) (C03-0625-071) **(in Hardware Bag)**
 - 1 Lock Washer (5/8) (C02-0625-010) **(in Hardware Bag)**
- 2..... 3206920.....Clamp Cap
 - Use: 4 Hex Bolt (5/8 x 7 **Gr8**) (C03-0625-222)
 - 4 Wrought Washer (5/8) (C02-0625-030)
 - 4 Lock Washer (5/8) (C02-0625-010)
 - 4 Hex Nut (5/8) (C01-0625-010)
- 2..... 3307780-3.....Hitch Pin
 - Use: 2 Lock Washer (7/8) (C02-0875-010)
 - 2 Jam Nut (7/8-14) (C01-0875-060)
 - 2 Lynch Pin (7/16 x 1-3/4) (M11-0437-175)
- 1..... 3306980-4.....Yoke Pin
 - Use: 1 Spring Pin (3/8 x 3-1/4) (C23-0375-270)
 - 1 Lunch Pin (7/16 x 1-3/4) (M11-0437-175)

1..... 1000SR-H Hardware Bag Containing: (Shipped Wired Inside Hopper)

- 12..... C01-0500-080..... Hub Nut (1/2-20)
- 1..... C02-0625-010..... Lock Washer (5/8)
- 1..... C03-0625-071..... Hex Bolt (5/8 x 1-3/4)
- 1..... C11-0209-010..... Drive Screw (#12 x 1/2)
- 8..... C20-0093-020..... Cotter Pin (3/32 x 3/4)
- 4..... C22-0250-200..... Clevis Pin (1/4 x 2-5/8)
- 1..... J02-0375-000..... Lube Cap
- 4..... L04-0005-000..... Cable Tie (5/16 x 15-1/4)
- 1..... M10-0005-004..... Plastic Canister, Manual Holder
- 1..... M11-0025-000..... SMV Mounting Sockets
- 1..... 0197102-1..... Manual Holder Bracket
- 4..... 1406318..... Cover Lock

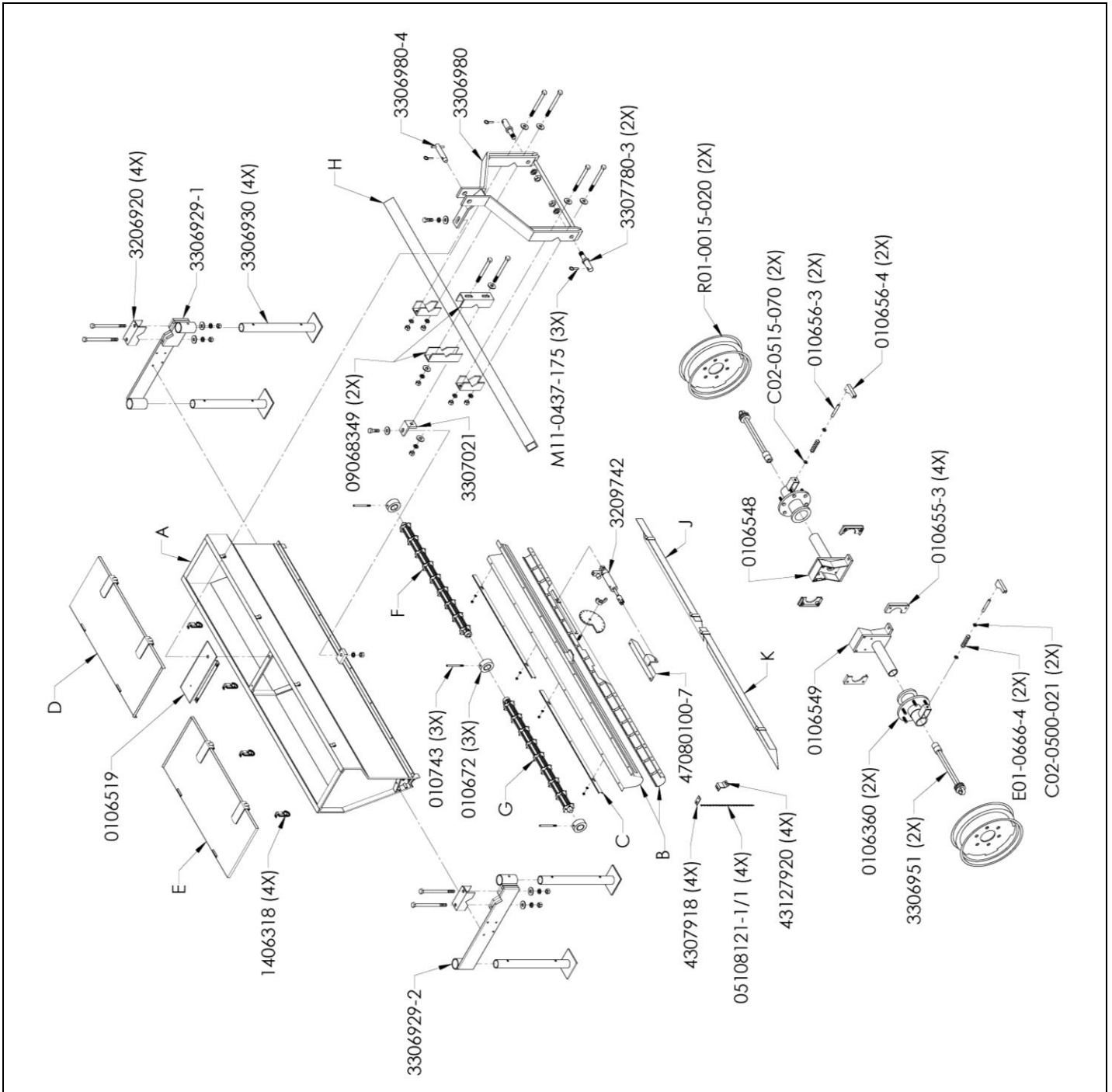
Powder Angles

Powder Angles are recommended for powdery materials. They are furnished with "T" series unites, available for agricultural models. Install alternately UP and Down. Draw hex bolt snug with out bowing 1/4 inch square rod.

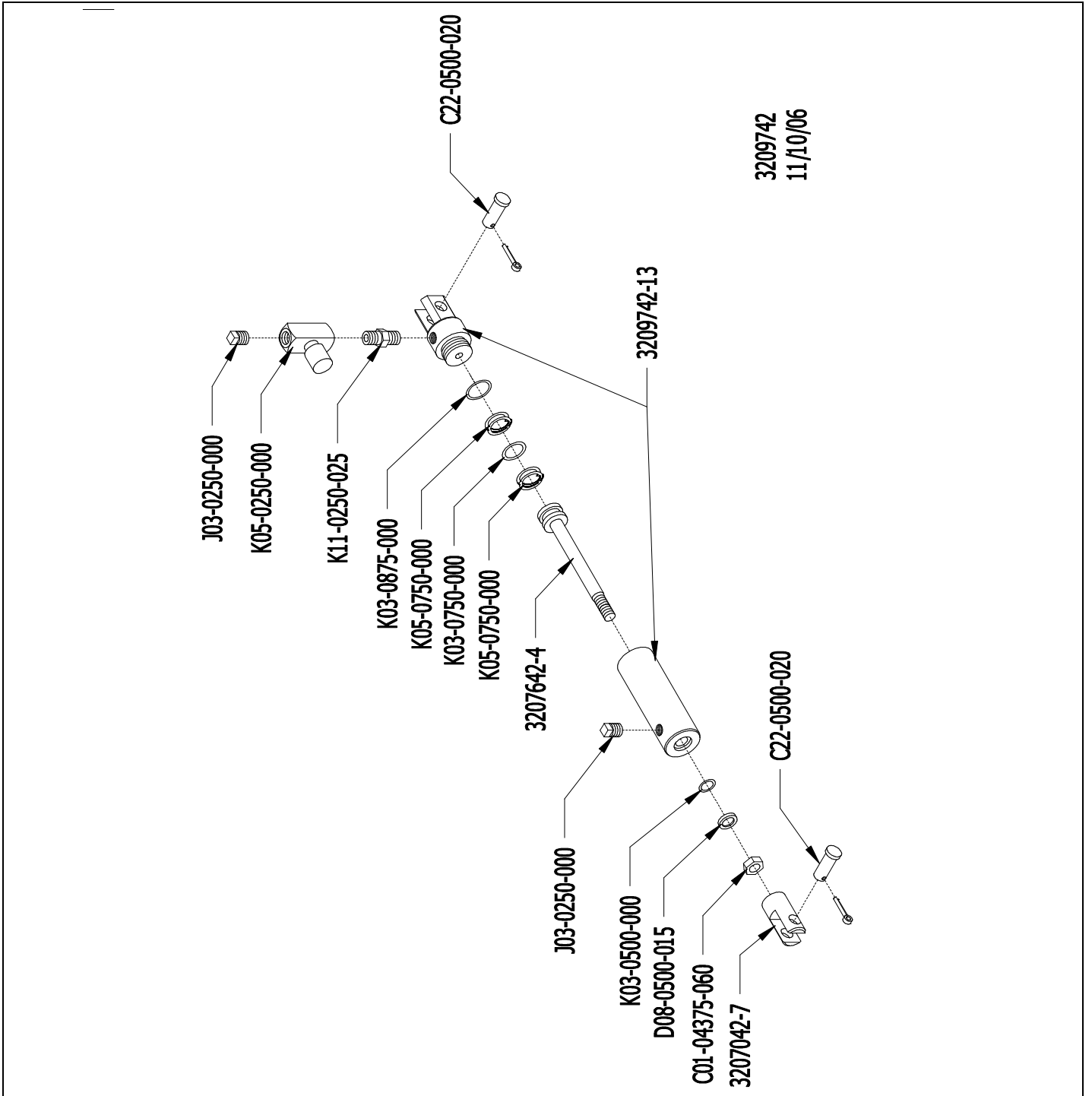


Hopper Schematic

	1006T-TR	1008T-TR	1010T-TR	1012T-TR
A	016651	018651	0110651	0112651
B	0568011&12	0588011&12	05108011&12	05128011&12
C	0108016-32	0108016-21	0108016-24	0108016-32
D	0166517-1	0186517-1	01106517-1	01126517-1
E	0166517-2	0186517-2	01106517-2	01126517-2
F	0568098-1	0588098-1	05108098-1	05128098-1
G	0568098-2	0588098-2	05108098-2	05128098-2
H	3267586-76	3287586-100	32107586-124	32127586-148
J	4367921-----	0588221-1	05108121-1	43127921-1
K		0588221-2	05108121-2	43127921-2



Hydraulic Cylinder Schematic

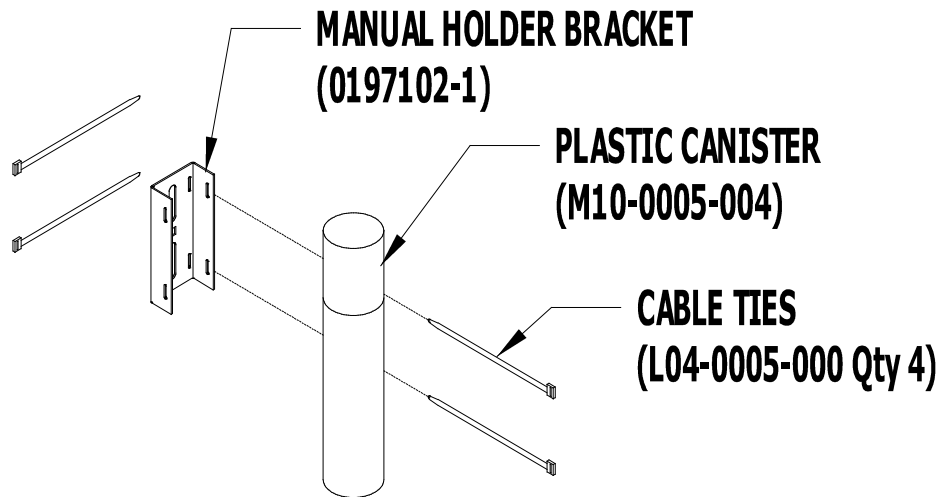


3209742
11/10/06

Manual Holder Bracket

Mount manual holder in a convergent location on unit.

Store Operator's manual, Packing List & Rate Chart for convergent access.



Maintenance

Check all bolts for tightness after first two hours of use; check periodically thereafter.

Grease all fittings regularly.

There are **nine** grease fittings on these hoppers.

There are **three** grease fittings on each wheel hub.

There is **one** grease fitting on each end bearing and **one** on the center bearing inside hopper.

See operator's manual for further instructions.

Optional Accessories (Ordered Separately, Not Part of Hopper Assembly)

#0108013----- Clamp-on Hole Closures (to close off openings, order one per opening)

#0108190----- Deflector, Side -Dressing (order one per opening)

Calibration Pans (For Catching Material)

#01125214 ----- Calibration Pan 6-Ft Long (order one for 6-ft hopper) (order two for a 12-ft hopper)

#01105214 ----- Calibration Pan 5-Ft Long (order two for a 10-ft hopper)

#0185214----- Calibration Pan 4-Ft Long (order two for a 8-ft hopper)

GDY-1006T TR -12T TR-PPL

Drawings; POWDERAS, 10T-TR, 3209742, HOLD3

August 8, 2013

Revised From (3/27/12)

Printed in the USA